



SAMHD1 (phospho-Thr592) rabbit pAb

Catalog No	YP-Ab-13861
Isotype	IgG
Reactivity	Human;Mouse;Rat
Applications	WB
Gene Name	SAMHD1 MOP5
Protein Name	SAMHD1 (Thr592)
Immunogen	Synthesized phosho peptide around human SAMHD1 (Thr592)
Specificity	This antibody detects endogenous levels of Human Mouse Rat SAMHD1 (phospho-Thr592)
Formulation	Liquid in PBS containing 50% glycerol, 0.5% BSA and 0.02% sodium azide.
Source	Polyclonal, Rabbit,IgG
Purification	The antibody was affinity-purified from rabbit serum by affinity-chromatography using specific immunogen.
Dilution	WB 1:1000-2000
Concentration	1 mg/ml
Purity	≥90%
Storage Stability	-20°C/1 year
Synonyms	SAM domain and HD domain-containing protein 1 (EC 3.1.4.-) (Dendritic cell-derived IFNG-induced protein) (DCIP) (Monocyte protein 5) (MOP-5)
Observed Band	72kD
Cell Pathway	Nucleus . Chromosome . Localizes to sites of DNA double-strand breaks in response to DNA damage. .
Tissue Specificity	Expressed in heart, skeletal muscle, spleen, liver, small intestine, placenta, lung and peripheral blood leukocytes (PubMed:11064105). No expression is seen in brain and thymus (PubMed:11064105).
Function	function:May play a role in mediating proinflammatory responses to TNF-alpha signaling.,induction:By interferon gamma. Up-regulated in TNF-alpha treated lung fibroblasts.,similarity:Contains 1 HD domain.,similarity:Contains 1 SAM (sterile alpha motif) domain.,tissue specificity:Expressed in heart, skeletal muscle, spleen, liver, small intestine, placenta, lung and peripheral blood leukocytes. No expression is seen in brain and thymus.,
Background	SAM and HD domain containing deoxynucleoside triphosphate triphosphohydrolase 1(SAMHD1) Homo sapiens This gene may play a role in regulation of the innate immune response. The encoded protein is upregulated in response to viral infection and may be involved in mediation of tumor necrosis factor-alpha proinflammatory responses. Mutations in this gene have been associated with Aicardi-Goutieres syndrome. [provided by RefSeq, Mar 2010],

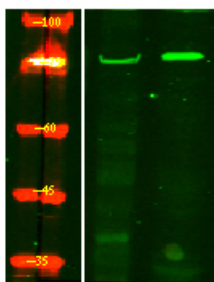
**matters needing attention**

Avoid repeated freezing and thawing!

Usage suggestions

This product can be used in immunological reaction related experiments. For more information, please consult technical personnel.

Products Images



Western Blot analysis of Hela treated or untreated by LPS lysis, using primary antibody at 1:1000 dilution. Secondary antibody(catalog#:RS23920) was diluted at 1:10000